

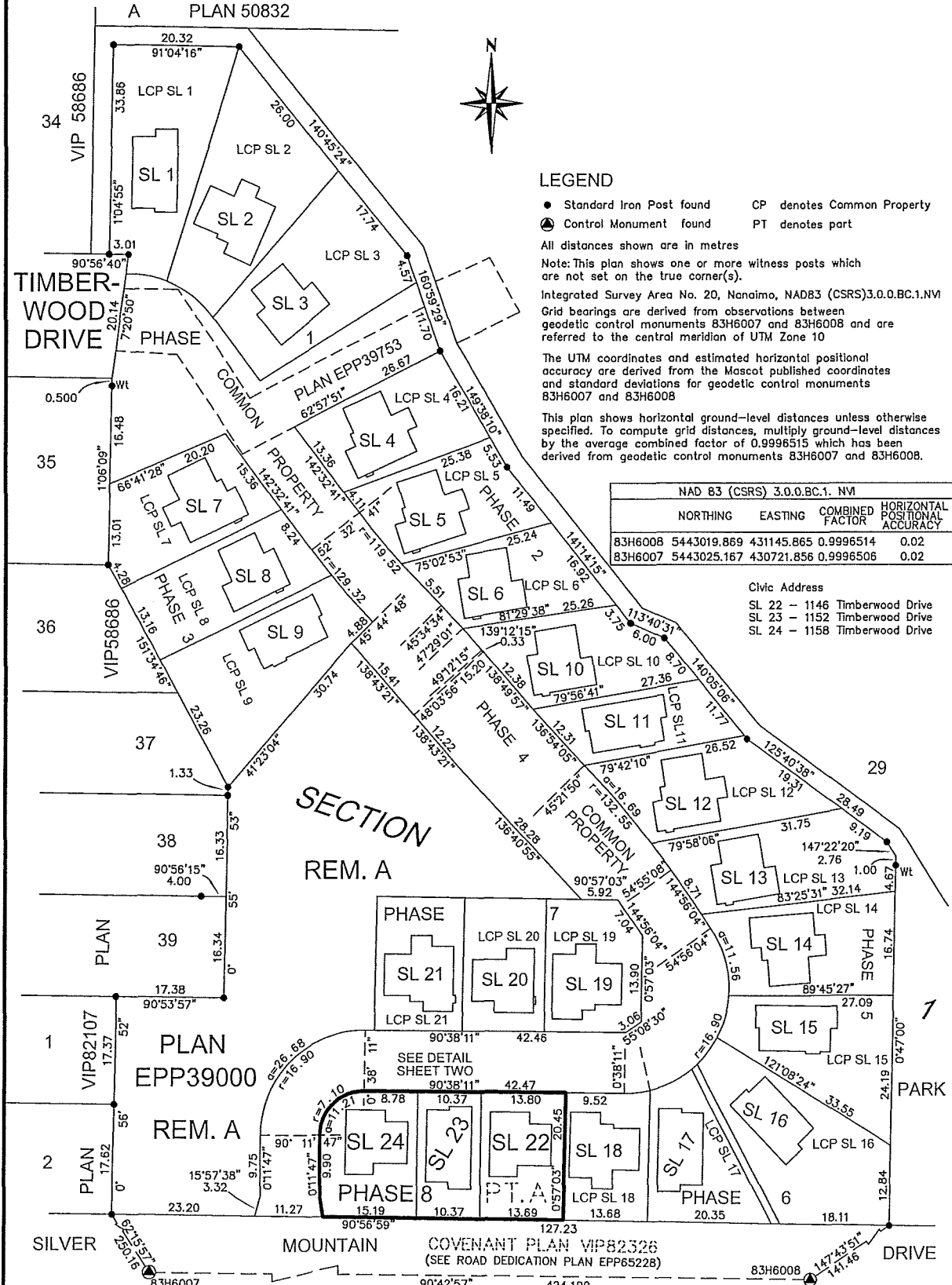
STRATA PLAN OF PART OF LOT A, SECTION 1,
NANAIMO DISTRICT, PLAN EPP39000, EXCEPT
STRATA PLAN EPS1989 PHASE 1-7
BCGS 92G.011

Sheet 1 of 6 Sheets

PHASE EIGHT
STRATA PLAN EPS1989



The intended plot size of this plan is 280mm in width by 432mm in height, B size, when plotted at a scale of 1:600.



LEGEND

- Standard Iron Post found CP denotes Common Property
- ⊙ Control Monument found PT denotes part

All distances shown are in metres

Note: This plan shows one or more witness posts which are not set on the true corner(s).

Integrated Survey Area No. 20, Nanaimo, NAD83 (CSRS)3.0.0.BC.1.NVI
Grid bearings are derived from observations between geodetic control monuments 83H6007 and 83H6008 and are referred to the central meridian of UTM Zone 10

The UTM coordinates and estimated horizontal positional accuracy are derived from the Mascot published coordinates and standard deviations for geodetic control monuments 83H6007 and 83H6008

This plan shows horizontal ground-level distances unless otherwise specified. To compute grid distances, multiply ground-level distances by the average combined factor of 0.9996515 which has been derived from geodetic control monuments 83H6007 and 83H6008.

NAD 83 (CSRS) 3.0.0.BC.1. NVI				
	NORTHING	EASTING	COMBINED FACTOR	HORIZONTAL POSITIONAL ACCURACY
83H6008	5443019.869	431145.865	0.9996514	0.02
83H6007	5443025.167	430721.856	0.9996506	0.02

Civic Address

- SL 22 - 1146 Timberwood Drive
- SL 23 - 1152 Timberwood Drive
- SL 24 - 1158 Timberwood Drive

J.E. ANDERSON & ASSOCIATES
B.C. Land Surveyors - Consulting Engineers
Victoria - Nanaimo - Parksville, B.C.
File: 86129

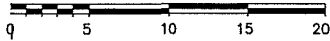
This plan lies within City of Nanaimo and the Regional District of Nanaimo

The field survey represented by this plan was completed on the 14th day of March, 2017.
D.G. Wallace, B.C.L.S. 590

STRATA LOTS 22,23 AND 24 FOUNDATION DETAIL

Sheet 2 of 6 Sheets

PHASE EIGHT STRATA PLAN EPS1989



The intended plot size of this plan is 280mm in width by 432mm in height, B size, when plotted at a scale of 1:300.



The buildings shown hereon are within the external boundaries of the land that is the subject of this Strata Plan.

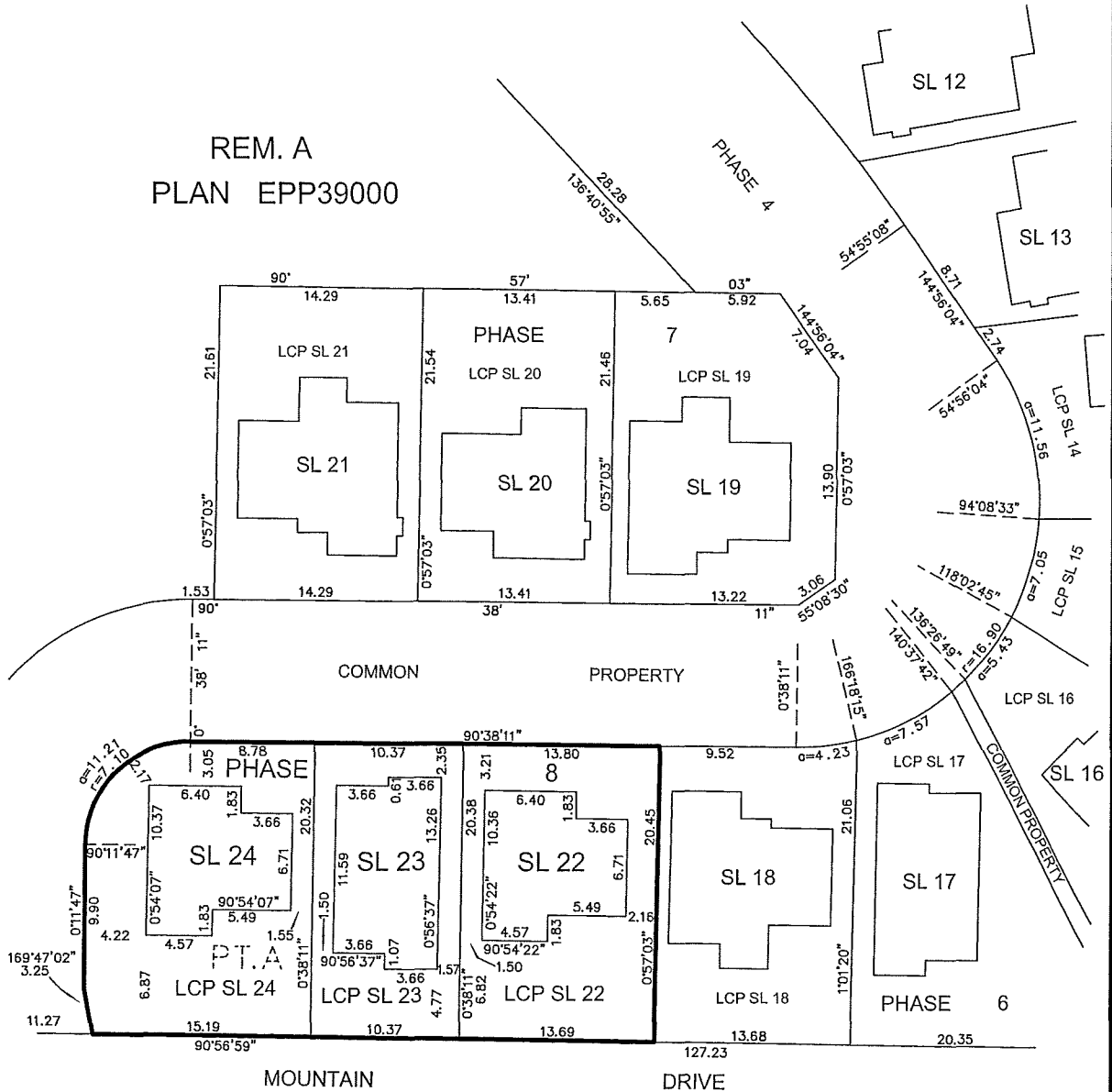
The buildings included within this Strata Plan have not been previously occupied

The height of the strata unit is defined by the centreline of the floor above, or in the case of the top floor, the height is defined by the centreline of the roof

This Plan is phase 8 of an 9 phase Strata Plan under Section 224 of the Strata Property Act lying within the jurisdiction of the Approving Officer for the City of Nanaimo

Offsets shown are to the exterior face of concrete foundation

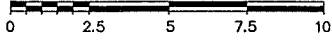
REM. A PLAN EPP39000



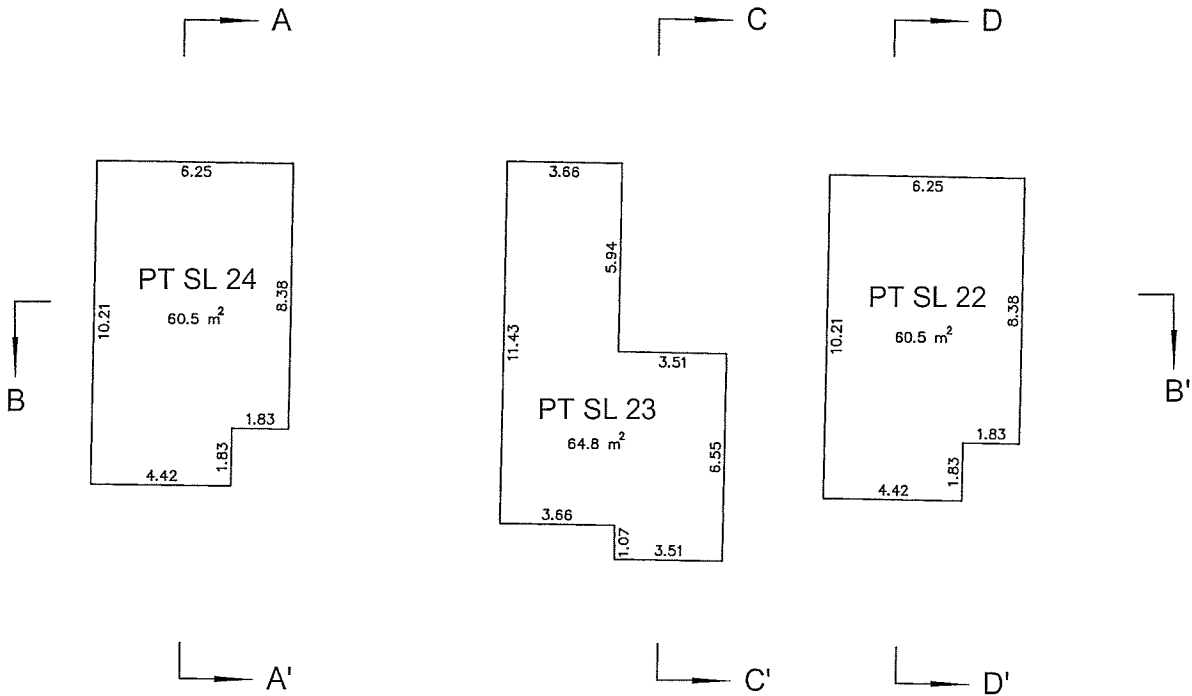
STRATA LOTS 22, 23 AND 24 CRAWL SPACE

Sheet 3 of 6 Sheets

PHASE EIGHT STRATA PLAN EPS1989



The intended plot size of this plan is 280mm in width by 432mm in height, B size, when plotted at a scale of 1:150.



This sheet shows dimensions to centreline of walls unless otherwise noted

Decks are measured to centreline of walls shared with strata lot and to exterior of deck surface

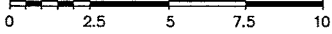
Patios are measured to centreline of walls shared with strata lot and to centreline of exterior walls

Decks and patios are defined as to height by the centreline of the floor above, or where there is no floor above, by the average height of the strata lot within

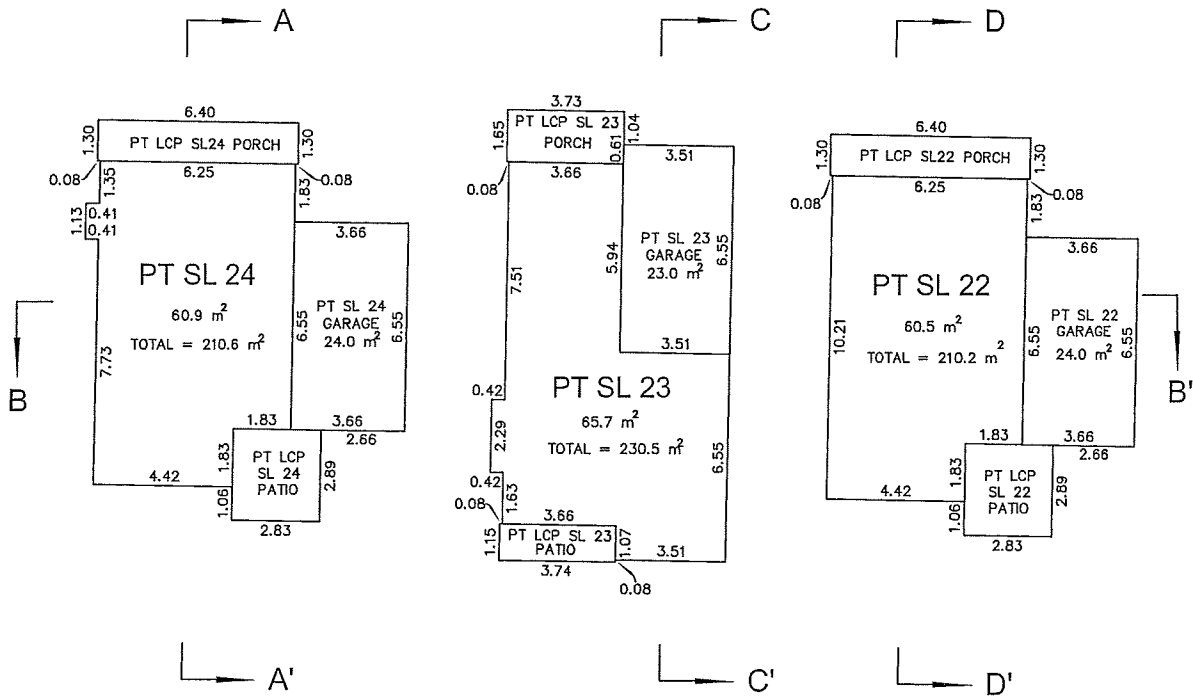
STRATA LOTS 22, 23 AND 24 FIRST (GROUND) FLOOR LEVEL

Sheet 4 of 6 Sheets

PHASE EIGHT STRATA PLAN EPS1989



The intended plot size of this plan is 280mm in width by 432mm in height, B size, when plotted at a scale of 1:150.



This sheet shows dimensions to centreline of walls unless otherwise noted

Decks are measured to centreline of walls shared with strata lot and to exterior of deck surface

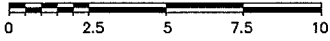
Patios are measured to centreline of walls shared with strata lot and to centreline of exterior walls

Decks and patios are defined as to height by the centreline of the floor above, or where there is no floor above, by the average height of the strata lot within

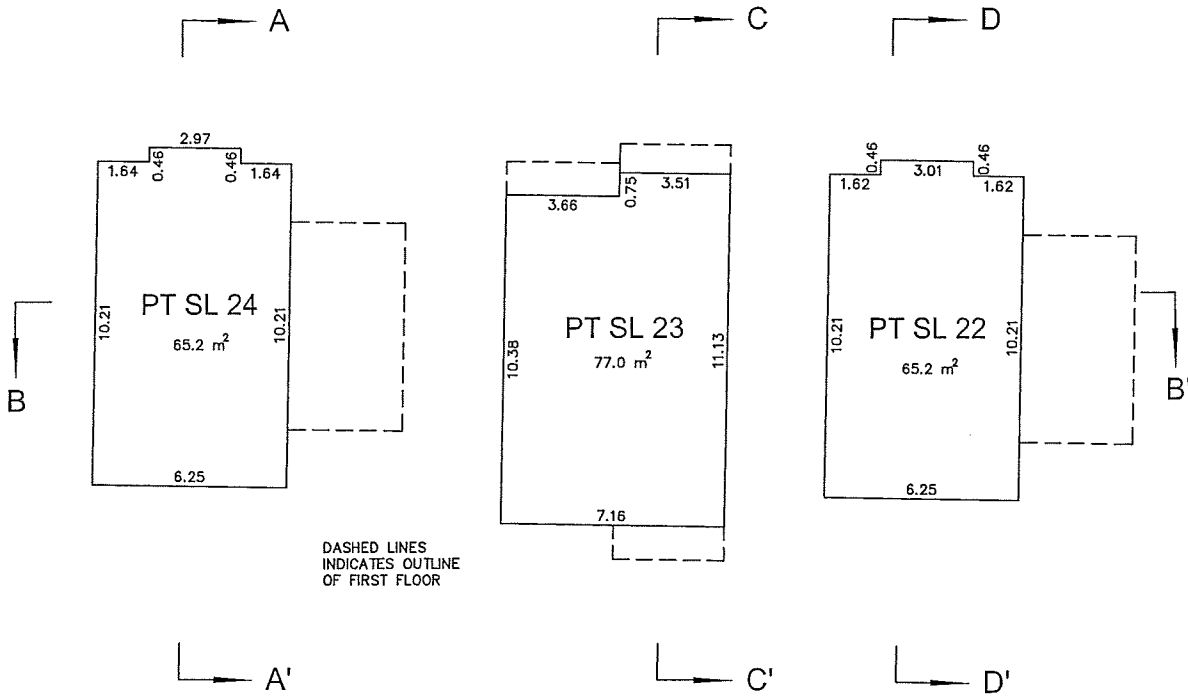
STRATA LOTS 22, 23 AND 24 SECOND FLOOR LEVEL

Sheet 5 of 6 Sheets

PHASE EIGHT STRATA PLAN EPS1989



The intended plot size of this plan is 280mm in width by 432mm in height, B size, when plotted at a scale of 1:150.



DASHED LINES
INDICATES OUTLINE
OF FIRST FLOOR

This sheet shows dimensions to centreline of walls unless otherwise noted

Decks are measured to centreline of walls shared with strata lot and to exterior of deck surface

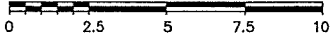
Patios are measured to centreline of walls shared with strata lot and to centreline of exterior walls

Decks and patios are defined as to height by the centreline of the floor above, or where there is no floor above, by the average height of the strata lot within

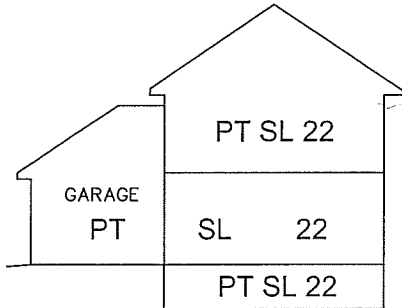
STRATA LOTS 22, 23 AND 24 SECTIONS

Sheet 6 of 6 Sheets

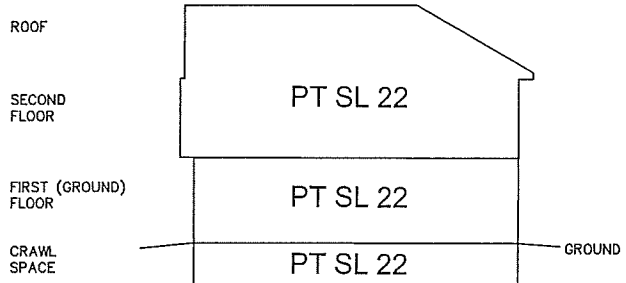
PHASE EIGHT STRATA PLAN EPS1989



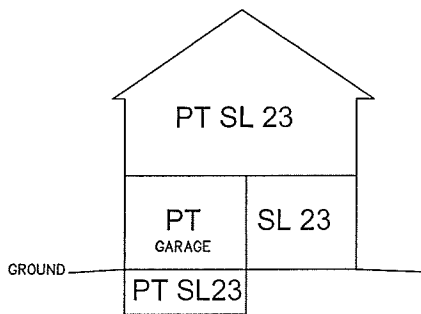
The intended plot size of this plan is 280mm in width by 432mm in height, B size, when plotted at a scale of 1:150.



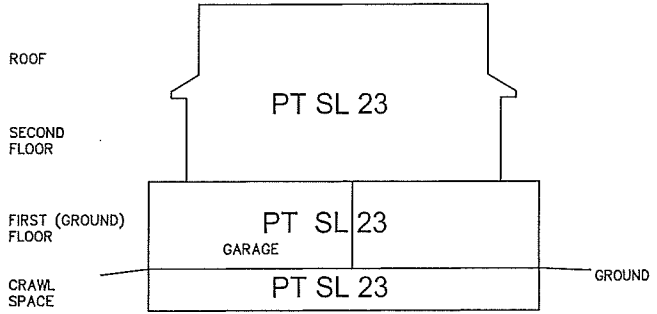
SECTION B'-B



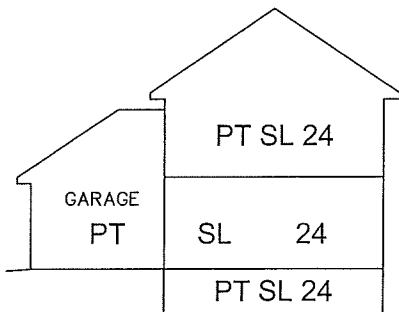
SECTION D-D'



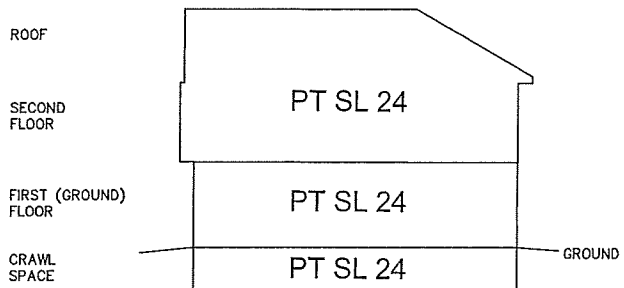
SECTION B'-B



SECTION C-C'



SECTION B'-B



SECTION A-A'